

SKYVIEW



▲ The Foursquare (C)

MODEL 25 - 22 www.nuvistahomes.com Total: 2232 sq. ft.

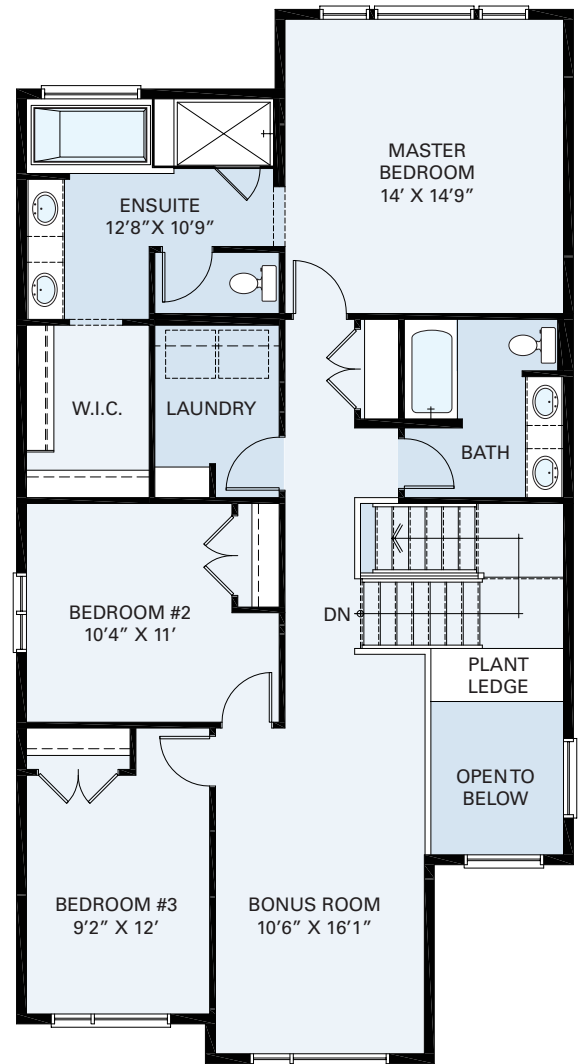
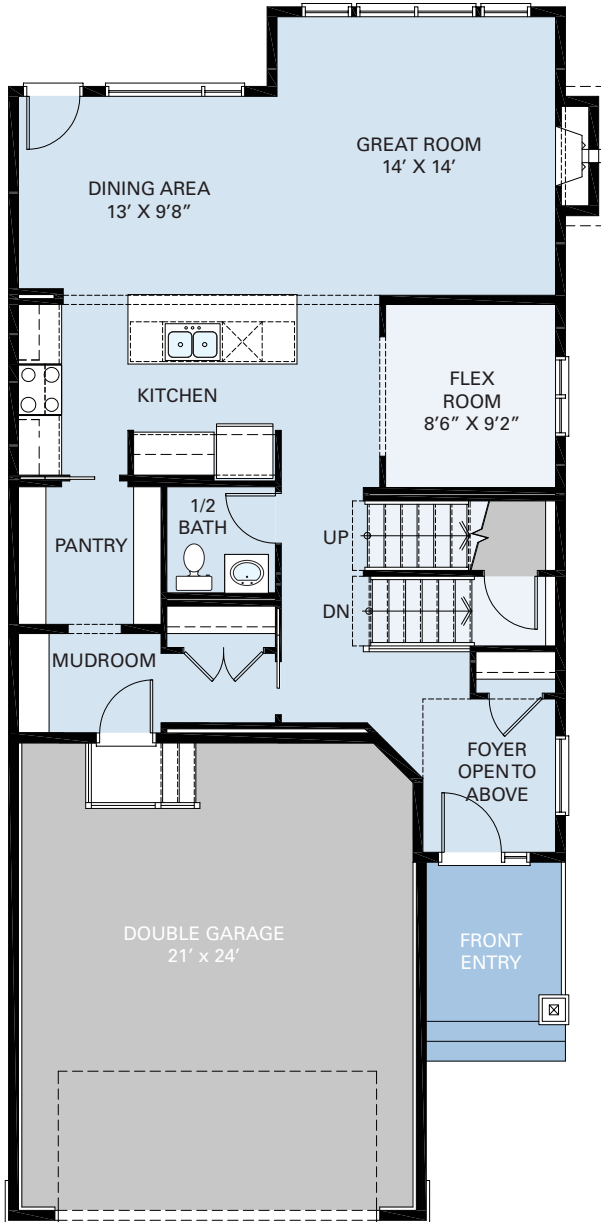


- 3 bedrooms, 2.5 bathrooms
- 9' main floor main
- Spacious kitchen with large island and walk-thru pantry to mudroom
- Garage access has built-in bench with coat hooks
- Main floor flex room
- Upper floor laundry has built-in wire shelves
- Large upper floor bonus room
- Master has 5 piece ensuite and huge walk-in closet

* Photos are not exact representations of plan

WIDTH: 28'
MODEL 25 - 22

SKYVIEW



9' MAIN LEVEL

MAIN LEVEL: 1032 sq.ft. UPPER: 1200 sq.ft. TOTAL: 2232 sq.ft.
info@nuvistahomes.com • www.nuvistahomes.com

*Based on one elevation, refer to blueprint for elevation specific floorplans. The design is published by NuVista Homes and is subject to change without notice. All rights reserved, including the rights of reproduction in whole or in part in any form. NuVista reserves the right to change specification and plan without notice, however, guarantees that change will be of greater value. Room dimensions are approximate.